

Planetary Centrifugal Mixer

# THINKY MIXER

## ARE-312



Going one step further than the flagship models, the next generation of world-standard models have made their debut.

- ✓ Improved mixing power and defoaming power
- ✓ Suppresses the temperature rise of the main unit and allows temperature measurement inside the device
- ✓ Communication function supports traceability and control from external devices
- ✓ CE certified model (EN61010-1:2010+A1:2019)
- ✓ Long-term operation is possible even with highly loaded materials (maximum operation time 30 minutes)
- ✓ Improved safety with the addition of a impact sensor

Maximum capacity

**310 g**

Standard container

**300 & 150ml**  
HDPE container



**Application**

**Intuitive operation interface and VA panel adopted. Displays the rotation speed during operation in real time**

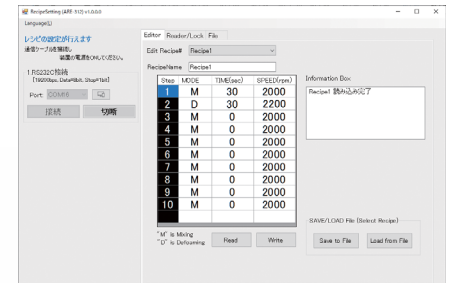
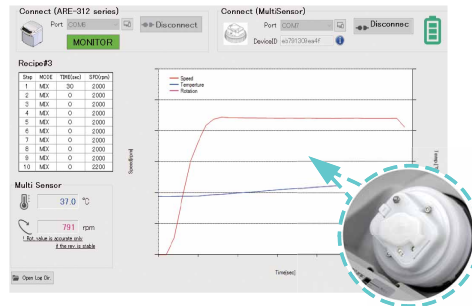
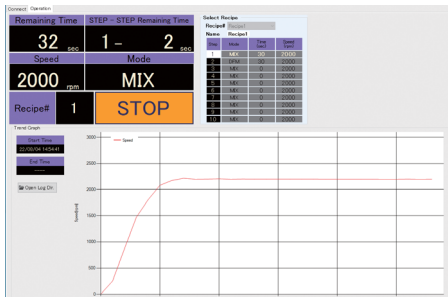
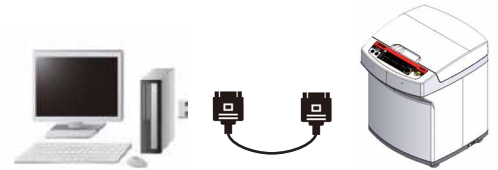


Step, mixing/defoaming mode, time, and rotation speed can be set using the three buttons "SELECT", "+" (plus), and "-" (minus), and up to 20 recipes can be registered. In addition, the rotation speed (revolution) during operation is displayed in real time in the center of the panel.

**Communication function**

Provides "remote control" and "traceability" functions.

The communication protocol is publicly available. In addition, a Windows application that uses communication functions is included as standard.



**Controller**

You can start/stop operation, report operating status, report abnormal stop information, and output device information from external devices.

**monitoring**

Get mixer operating information. It can also be linked with multiple sensors depending on the operating status. Measured data can be saved to a file.

**Recipe settings**

You can edit recipes from your PC. It also has recipe file import/export and recipe lock functions.

**Specifications**

Product name	Planetary Centrifugal Mixer "THINKY MIXER"
Model	ARE-312
System	Planetary propeller-less mixing
Operation Time Setting	Timer setting range: 0 s to 30 min in 1 s increments
Programming Function	20 memories with 10 steps
Standard Container*1	Inner volume:300 ml and 150 ml , Material: HDPE
Maximum Capacity*2	310 g
External Communication Function	RS232C serial port ( D sub 9 pin )

Power Supply	Voltage	Single-phase AC100 ~ 230V ± 10%, 50/60Hz
	Power Consumption	Approx. 50 VA (standby) Max 900 VA (operation)
Operating Environment	10 to 35 °C, 35 to 85 % RH(without condensation)	
Safety Mechanism *3	Revolution Sensor, Vibration Sensor, impact Sensor, Door Sensor	
Unit Dimensions	H390 × W300 × D340 (mm)	
Unit Weight	Approx. 21 kg	

\*1: Contact us because the actual volume of mixing may vary depending on the containers, materials, and conditions.  
\*2: Total mass to mount on the cup holder, including materials, containers, and adapters.  
\*3: Products are shipped and delivered in a locked state. Release the lock before use.

Product appearance/specifications may change without notice.

**THINKY CORPORATION**

Headquarters: 2-16-2 Sotokanda, Chiyoda-ku, Tokyo 101-0021  
Phone: +81-3-5207-2713 Fax: +81-3-5289-3281  
THINKY USA Inc.: 23151 Verdugo Drive, Suite 112 Laguna Hills, CA 92653, USA  
THINKY CHINA: East building, HaiAn Kafunuo Mansion, Shennan road, Qianhai road, Nanshan district, Shenzhen  
<https://www.thinkymixer.com/en-gl/>

Sales agent



**C3 PROZESS- UND ANALYSETECHNIK**

Peter-Henlein-Str. 20  
D-85540 Haar b. München  
Telefon 089/45 60 06 70  
Telefax 089/45 60 06 80  
info@c3-analysentechnik.de  
www.c3-analysentechnik.de